



GROSVENOR HILL

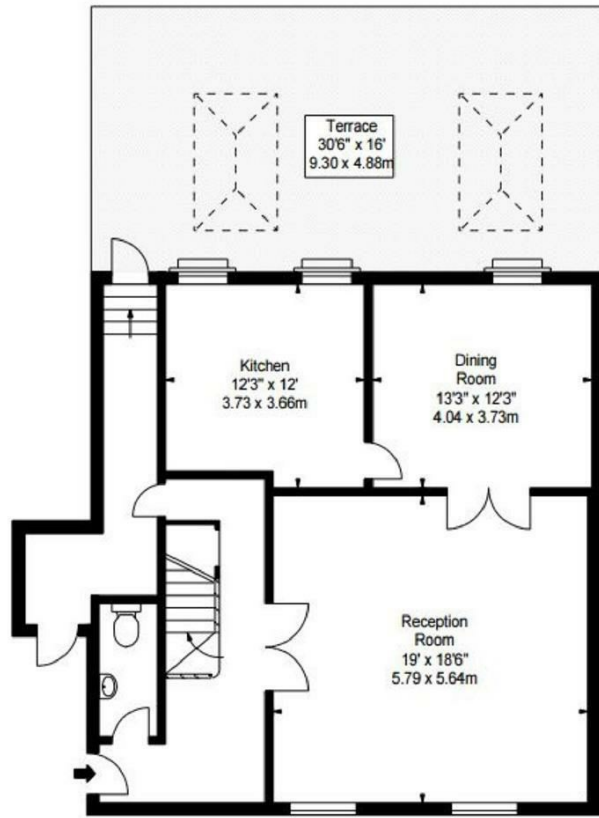
MAYFAIR, W1K

£4,200 PER WEEK

A magnificent split level two bedroom apartment with a large private terrace, individually designed to the highest specification. Being located within the heart of Mayfair, neighbouring the infamous Berkeley Square, makes this apartment a fantastic central London base.

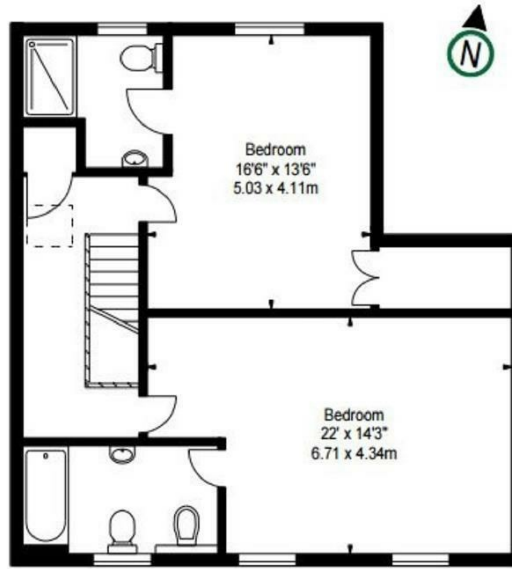
The apartment comprises two interconnecting reception rooms with ample living and dining space, a stunning eat in kitchen, guest cloakroom and two double bedrooms with en-suite marble bathrooms. The apartment also benefits from a spectacular private decked roof terrace to the rear of the property offering the perfect space for private entertaining.

PMP | INTERNATIONAL

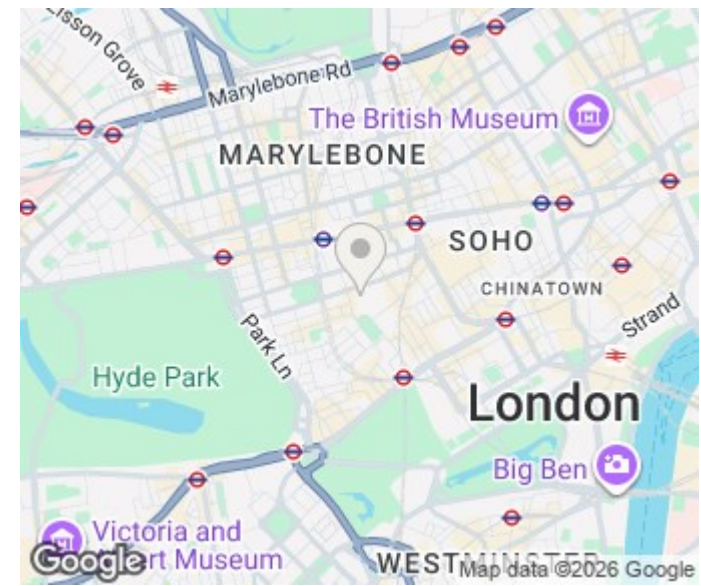


SECOND FLOOR

APPROX. GROSS INTERNAL AREA *
 1760 Ft² - 163.50 M²
 Illustration For Identification Only, Not to Scale
 All Calculations include Any/All Areas Under 1.5m Head Height.
 * As Defined by RICS - Code of Measuring Practice



THIRD FLOOR



Energy Efficiency Rating		Current	Potential
Very energy efficient - lower running costs			
(92 plus) A			
(81-91) B			
(69-80) C			70
(55-68) D		46	
(39-54) E			
(21-38) F			
(1-20) G			
Not energy efficient - higher running costs			
England & Wales		EU Directive 2002/91/EC	

Agents Note: Whilst every care has been taken to prepare these particulars, they are for guidance purposes only. All measurements are approximate and are for general guidance purposes only and whilst every care has been taken to ensure their accuracy, they should not be relied upon and potential buyers/tenants are advised to recheck the measurements

London
 PMP International
 94 Belsize Lane
 Belsize Park
 London
 NW3 5BE

020 7701 2878
 info@pmpi.co.uk
 www.pmpi.co.uk

PMP | INTERNATIONAL